

Creating Texture and Atmosphere with Lines

Last class, we learned about **atmosphere**, or how to create mood or feeling in a piece of art. Today, we will explore how lines and **texture** can be used to create mood or **atmosphere** in a work of art!

Remember, **texture** is the way something feels, or how it looks like it would feel if we touched it.

Looking at the two paintings of water below, you can see that the different **textures** used in each piece create different moods or feelings as we look at them. What moods or **atmosphere** do you sense in each piece?



Energetic, engaging, exciting, mesmerizing



Still, immersive, enveloping, meditative



The texture of the water is stirring, or rippling.

wavy, winding, lines texture the water



The texture of the water is smooth

horizontal lines texture the water.



Artists often use lines in a work of art to create **texture**.

Lines which are diagonal, curved, wavy, or winding, often appear to be in motion.

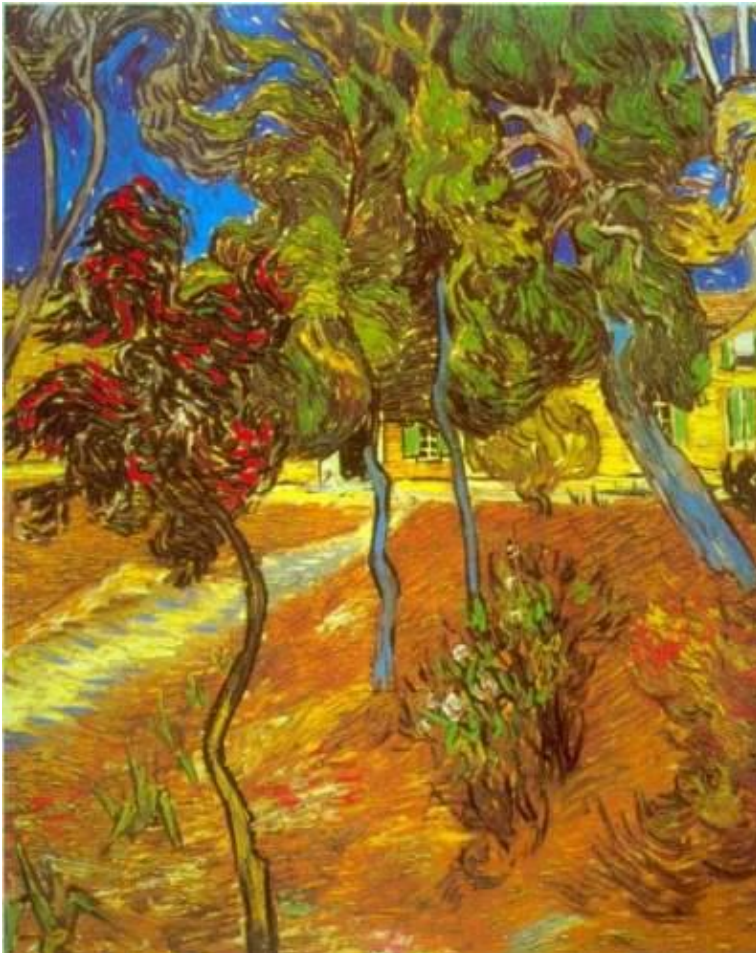
When an artist uses these types of lines to create **texture** in a piece of art, it can create an energetic, exuberant, or dynamic, mood or **atmosphere**.

Landscapes and People

Sophie Treppendahl

Looking at these pieces of art, where do the artists use diagonal, curved, wavy, or winding lines to create texture? (More examples on the next page!)

How does this effect the mood or **atmosphere** of the piece? Does it add to a sense of energy or excitement?



Trees

Vincent Van Gogh



The Sea

Renee Palmer-Jones



Ocean Waves

Adriana Dzubia



Erin Hanson

Lighted Sky



Just as artists often use wavy or diagonal lines to create **texture** in art, they also often use horizontal and vertical lines to make **texture**.

Lines which are horizontal, or vertical, often appear to be “still” or motionless.

For this reason, horizontal and vertical lines can create a tranquil **atmosphere** or mood in a piece of artwork, as we often think of things that are motionless or stationary as undramatic or calm.

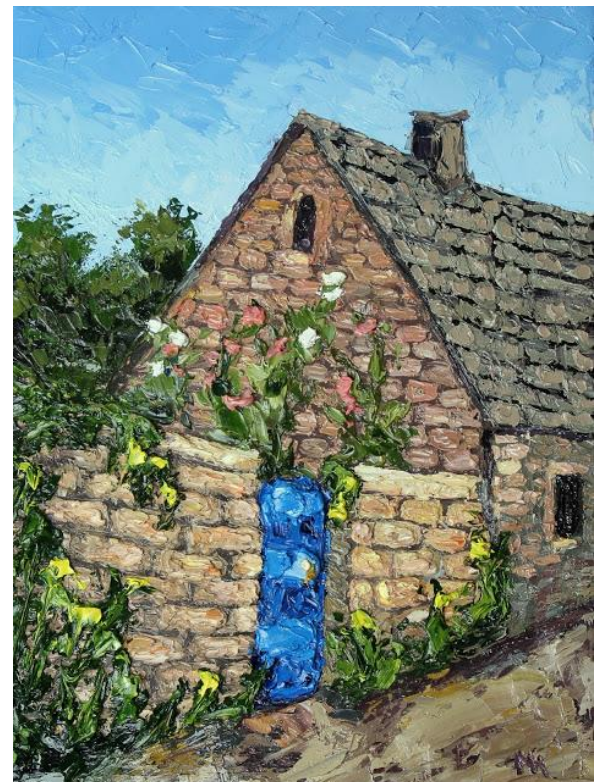
Looking at these pieces of art, where do the artists use horizontal, and vertical, lines to create **texture**? (More examples on the next page!)

How does this effect the mood or **atmosphere** of the piece? Does it add to a sense of calm or tranquility?

Sunset
Amita Dand



Deborah Quinn Munson
Landscape



English Cottage
Megan Hasenbeck



Wheat Field

Nancy Merkle



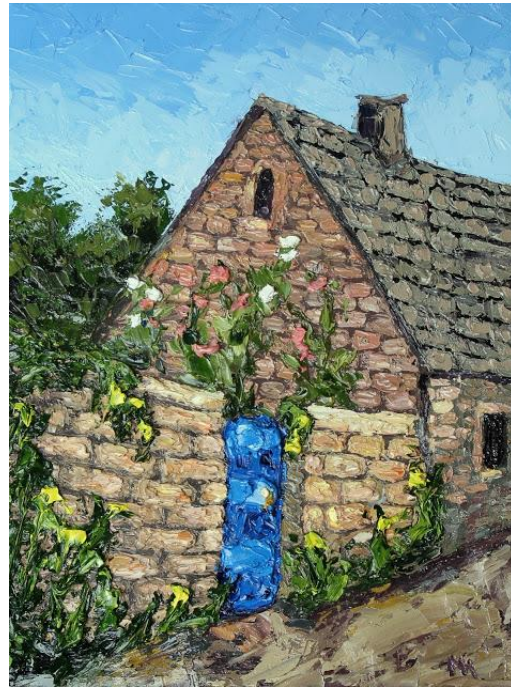
Cornflowers

Colette Baumbach

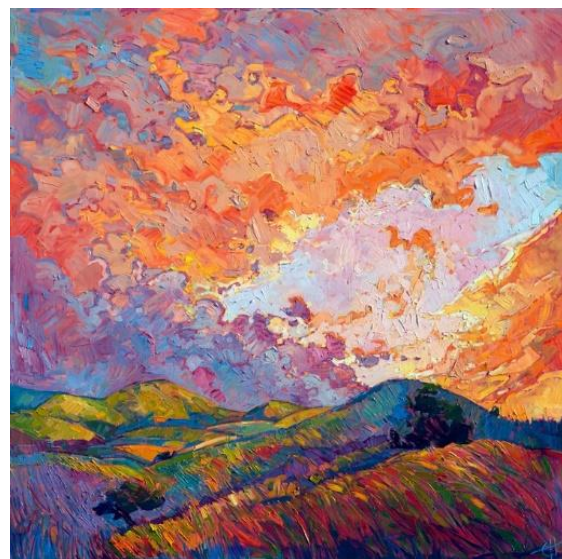
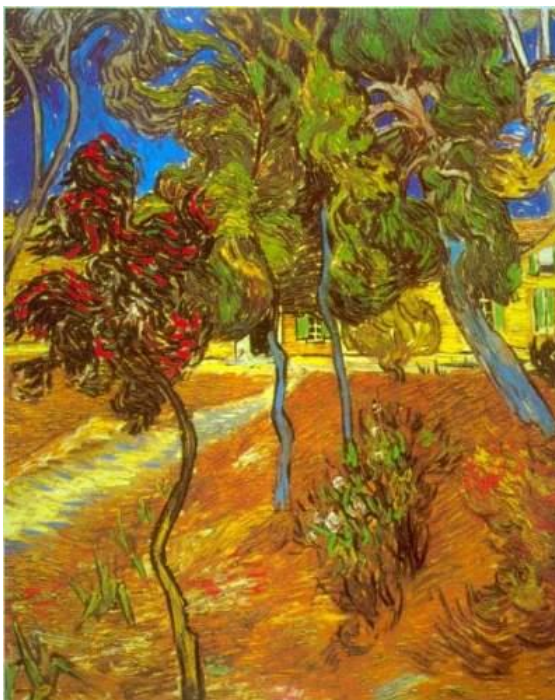
For this assignment, we will create two drawings in which we use line and texture to create **atmosphere**.

In one of the drawings, try to create a calm mood or **atmosphere**, using either vertical or horizontal lines to create texture in what you are drawing.

You can look around for objects that would work well with this assignment, like flowers, or you can draw landscapes like your backyard or house!



In the second drawing, try to create a more energetic mood or **atmosphere**, using wavy, curved, winding, or diagonal lines. If you have a hard time finding something that has these types of lines, you can fill a bowl with water and see how the lines look. Or you can look at trees and clouds!



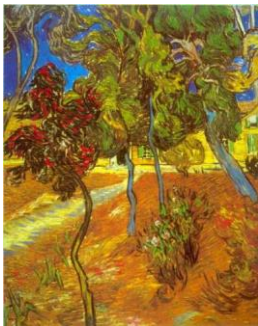
Works Cited: Below are the links where I found images used in this assignment



<http://www.sophietreppendahl.com/current-work>



<https://www.saatchiart.com/art/Painting-Sunset-Small-Painting/972854/6605685/view>



[http://www.awesome-art.biz/awesome/images/t_Van Gogh - Trees.jpg](http://www.awesome-art.biz/awesome/images/t_Van_Gogh_-_Trees.jpg)



<https://osnatfineart.com/painting/6266-the-sea>



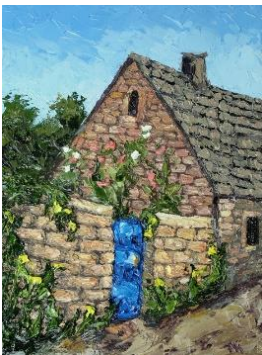
https://society6.com/product/ocean-waves-palette-knife-abstract-painting-of-sea-landscape_stretched-canvas



https://www.erinhanson.com/p/lighted_sky



<https://picassos.org/19-pallet-knife-paintings-to-celebrate-the-season/>



<http://mhasenbeck.blogspot.com/2013/04/english-cottage.html>



<http://small-impressions.blogspot.com/2008/02/wheat-field-original-abstract-american.html>



<https://www.pinterest.com/pin/561753753503456685/>